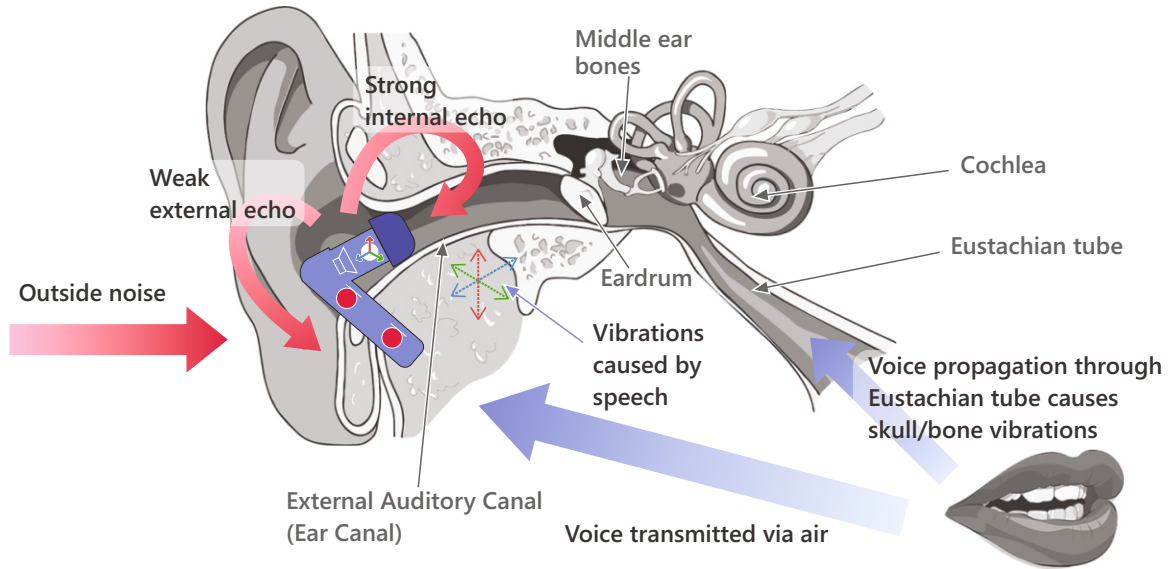


ALANGO OnlyVoice™ SOUND PICKUP TECHNOLOGY

A smart headset technology capturing **ONLY** the users **VOICE**

Voice conduction pathways - OnlyVoice with in-ear vibration sensor



Speech is captured externally and internally:

- External microphones capture user's speech and, when present, ambient noise.
- Internal microphone or vibration sensor (pictured above) captures user's speech, which is isolated from noise but limited by a maximum frequency of 1.5kHz.
- Alango Adaptive Dual Microphone technology (ADM) enhances the signals from the two external microphones.
- Acoustic echoes are cancelled on the internal and external speech signals.
- Noises additionally suppressed with noise reduction technology.
- Signals from the external and internal channels are mixed into one noise-free signal by the intelligent OnlyVoice mixer depending on external and internal signal quality.

Block Diagram of OnlyVoice™ solution

